

**Smarter technology for all**

# **Lenovo Tab**

Your tablet. Your way.  
Effortless versatility for every lifestyle.

**Lenovo**

# Lenovo Tab

## Project Name

(Internal only!)

Poplar

## Target Audience

16-34 Y/O Traditionalist & Apprehensive

## Positioning Statement

Discover the perfect blend of immersive entertainment, comfort, and convenience for versatile needs with our new Lenovo Tab. It is designed to seamlessly integrate into your life with a rich accessory ecosystem tailored for the family.



2024 Lenovo Internal. All rights reserved.

Lenovo Tab - Immersive entertainment

## Crisp visual

Stream your favorite shows and movies in up to 1080p quality, ensuring you never miss a moment of the action with crisp, clear visuals

**83%**

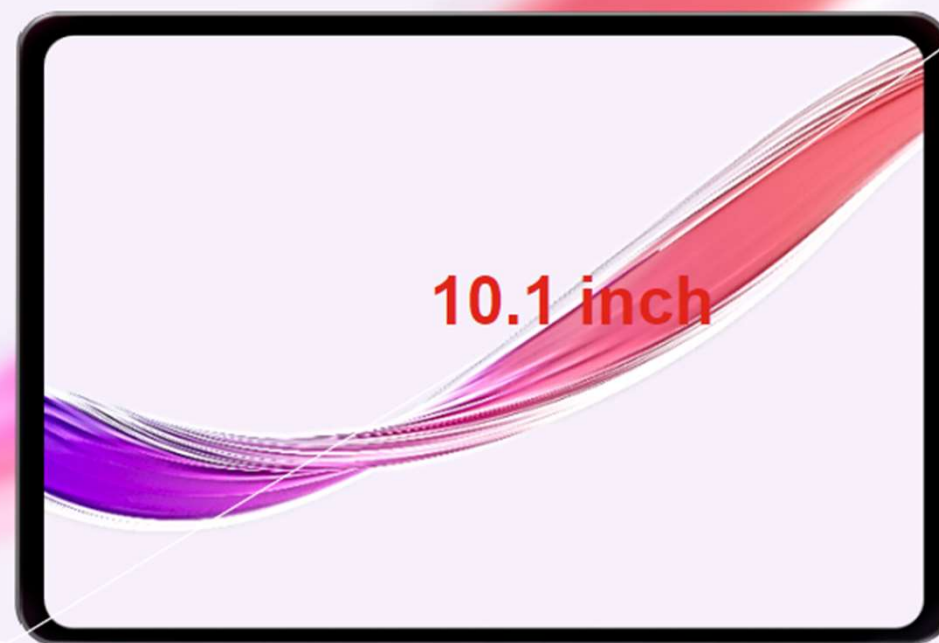
screen ratio

**400**

nits

**FHD**

1920 x1200



Lenovo Tab - peace of mind

## Sophisticated simplicity

Form and function perfected in a perfectly balanced design. The round-shaped all-metal tablet offers a comfortable grip and an elegant look



Luna grey



Polar blue

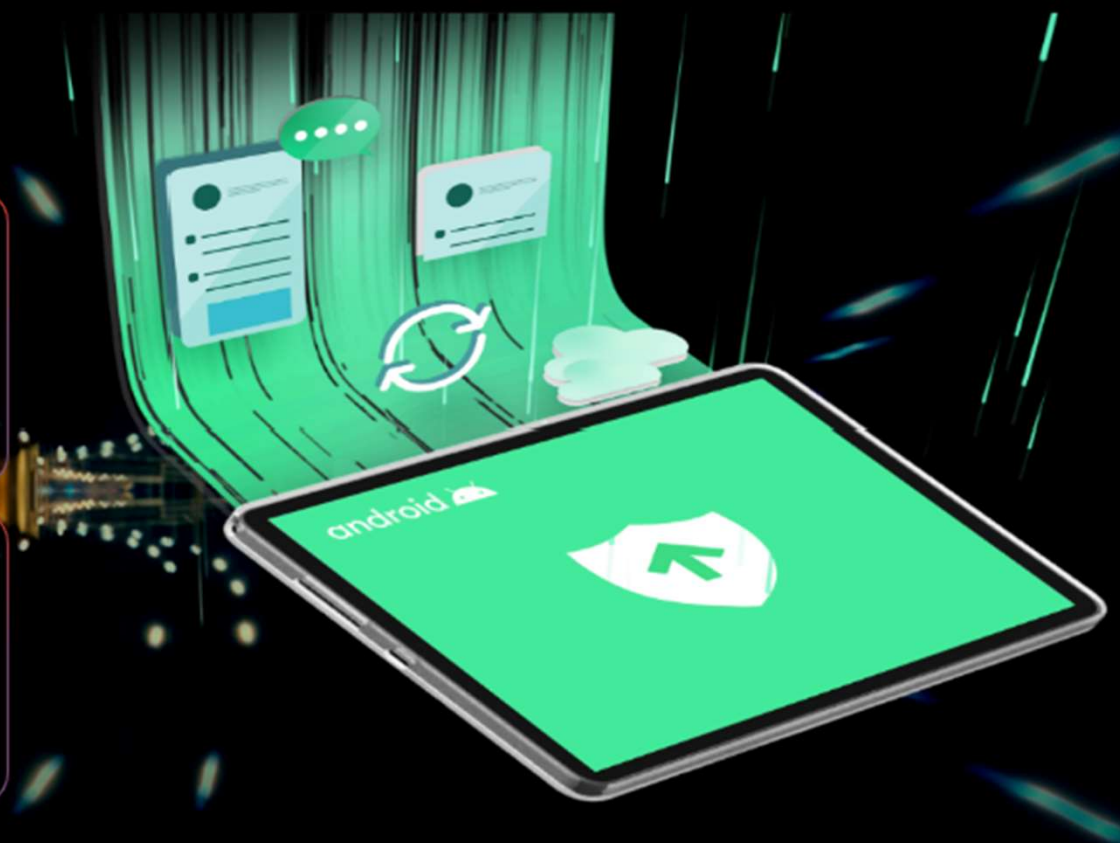
Lenovo Tab- peace of mind

## Stay secure and in-sync

### 2 OS upgrades

Out of the box: Android 14  
Upgrades to Android 15 & Android 16

4 years of security patches  
until Jan 2029





Lenovo Tab

## Key Spec



<b>Display</b>	10.1" 1920x 1200, 224PPI, Up to 400nits. 60Hz refresh rate
<b>Dimension</b>	235.7x154.5x7.5mm (excluding the camera bump)
<b>Weight</b>	~425g
<b>Network</b>	Wi-Fi5 LTE bands supported (for LTE SKU only) GSM: 850/900/1800/1900 UMTS: B1/2/4/5/6/8/19 FDD- LTE: B1/2/3/4/5/7/8/(12/13)/17/18/19/20/(25)/26/28(a+b)/66 TDD- LTE: 38/40/41(Full) WCDMA:W1/2/4/5/8
<b>Platform</b>	MediaTek™ Helio G85 Octa-core processor
<b>OS</b>	Launched with Android 14. Expect Android 15, 16 upgrades and 4 years security updates.
<b>Camera</b>	Front 5M FF Rear 8MP AF
<b>Memory</b>	4GB+64GB / 4GB+128GB
<b>Connectivity</b>	802.11a/b/g/n/ac BT 5.3 GPS+Glonass+Galileo
<b>I/O</b>	USB-C™ 2.0 3.5mm audio Jack MicroSD/SIM card slot (For LTE version only)
<b>Speakers</b>	2 x speaker Tuned by Dolby Atmos 1 x mics
<b>Sensors</b>	Hall / Accelerometer sensors
<b>Battery</b>	5100mah(typical) , support 15W charging adapter